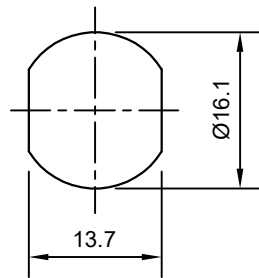
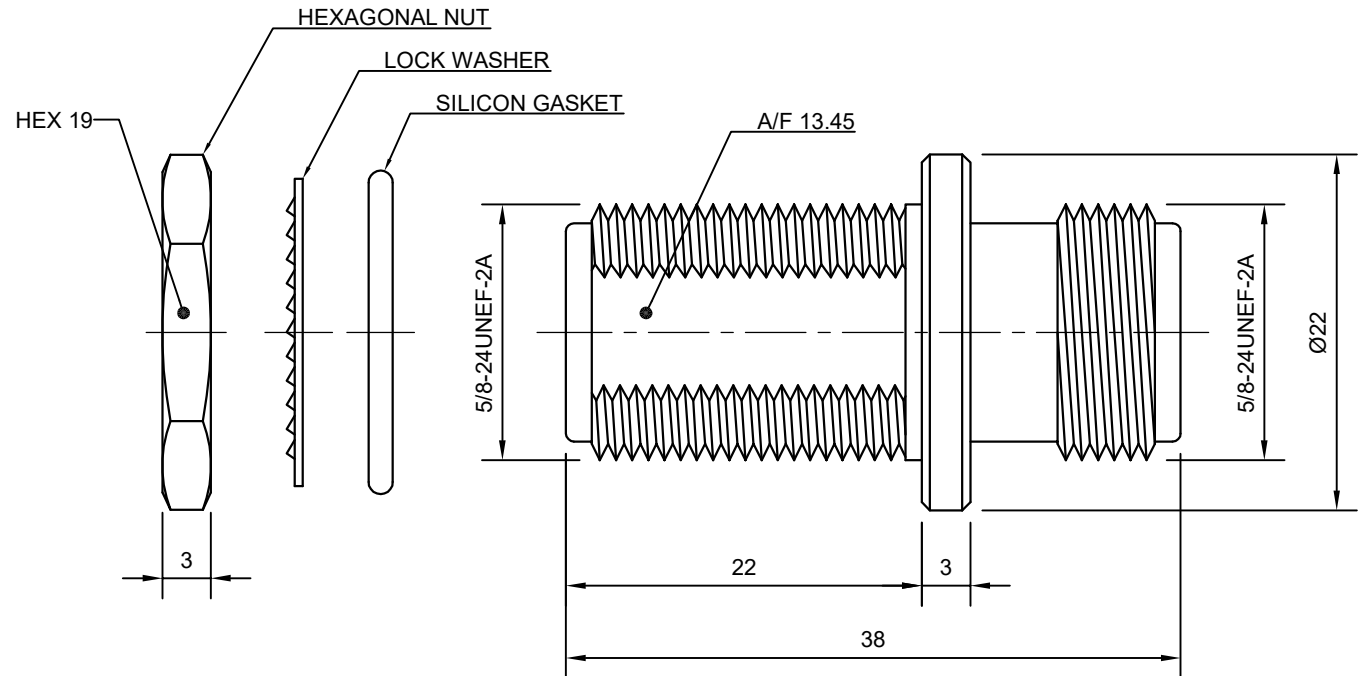


RevNo	Revision note	Date	Signature	Checked



Recommended Mounting Hole Dimension.

TECHNICAL DATA	
Type	Adapter
Orientation	Straight
Impedance (Ohms)	50
Adapter Side 1	N
Side 1 Gender	Jack
Adapter Side 2	N
Side 2 Gender	Jack
Body Finish	White Bronze
Body Material	Brass
Contact Finish	Gold
Contact Material	Phosphor Bronze
Insulator Material	PTFE
Max. Frequency (GHz)	11
Mounting Feature	Bulkhead
Min. Temp. (Celsius)	-65
Max. Temp. (Celsius)	165
Weight (Grams)	65.0

	SHEET	1 of 1	SCALE	NTS
	RF ADAPTER			
	N Female to N Female			
	BULKHEAD PANEL MOUNT TYPE			
	DWG NO	VSW-AD-421271-S		
DRAWN	VINAY	15.10.2018		
CHECK				
APPR.	VINAY	15.10.2018		
ISSUED				
REV	R0			

FILE PATH: D:\VINSUR\DRAWINGS -- VINSUR\ADAPTERS\N - N
 FILE NAME: ADAPTER - N Female to N Female Bulk Head - VSW-AD-421271-S.dwg

SIZE